



Bective Road
Kingsthorpe, Northampton

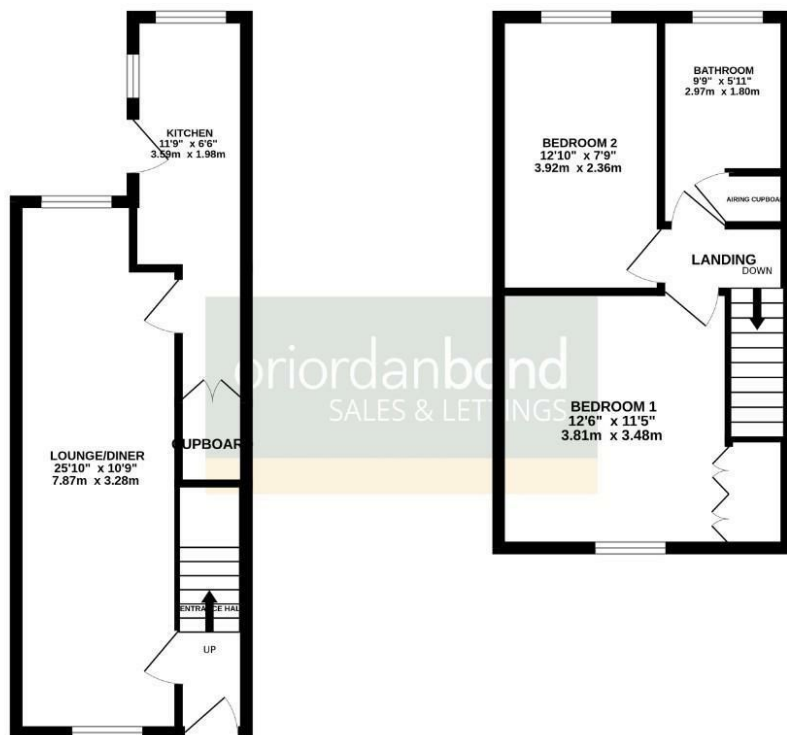
oriordanbond
SALES & LETTINGS



GROUND FLOOR
314 sq. ft. (29.2 sq. m.) approx.



1ST FLOOR
335 sq. ft. (31.2 sq. m.) approx.



TOTAL FLOOR AREA: 649 sq. ft. (60.3 sq. m.) approx.

Whilst every attempt has been made to ensure the accuracy of the floorplan contained here, measurements of doors, windows, rooms and any other items are approximate and no responsibility is taken for any error, omission or misstatement. This plan is for illustrative purposes only and should be used as such by any prospective purchaser. The services, systems and appliances shown have not been tested and no guarantee as to their operability or efficiency can be given.
Made with Metropix G2025.

Bective Road

Kingsthorpe
NN2 7TB

GUIDE PRICE £180,000

A mature two bedroom terraced property, located in the heart of Kingsthorpe, within walking distance to ample shops and facilities. The property is ideal for a first time buyer or buy-to-let investment.

The accommodation comprises entrance hall, open plan sitting/dining room and kitchen with large under stairs storage cupboard and access to the rear garden. From the first floor are two double bedrooms serviced by a three-piece family bathroom. Outside is a low maintenance garden with rear access. Further benefits include gas radiator heating and uPVC double glazing. (B/709/S)

Additional information

- Council Tax Band: A
- Energy Efficiency Rating: D

Viewing

Viewing strictly by appointment – details below

Disclaimer

O'Riordan Bond Estate Agents Limited has not tested apparatus, equipment, fittings or services and so cannot verify they are in working order. The buyer is advised to obtain verification from their solicitor or surveyor.

O'Riordan Bond Kingsthorpe Sales
01604 722007

kingsthorpe@oriordanbond.co.uk

